



MINDMEDIA
NEURO AND BIOFEEDBACK SYSTEMS

What's new BioTrace+ V2018A



V2018A

Audio and Video Library	4
EEG FFT Analysis	6
NeuroMapping Report	7
Search by last name	8
Updated Screens	9
EEG	9
Z-Score	9
EMG	9
HRV	9
Temperature	9
Respiration	9
My Screens	9
General Improvements and Fixes	10

BioTrace+ V2018A is the latest release of the software platform for NeXus. This version contains new or improved functionality. It also includes general improvements for more stability, better quality, and higher performance.

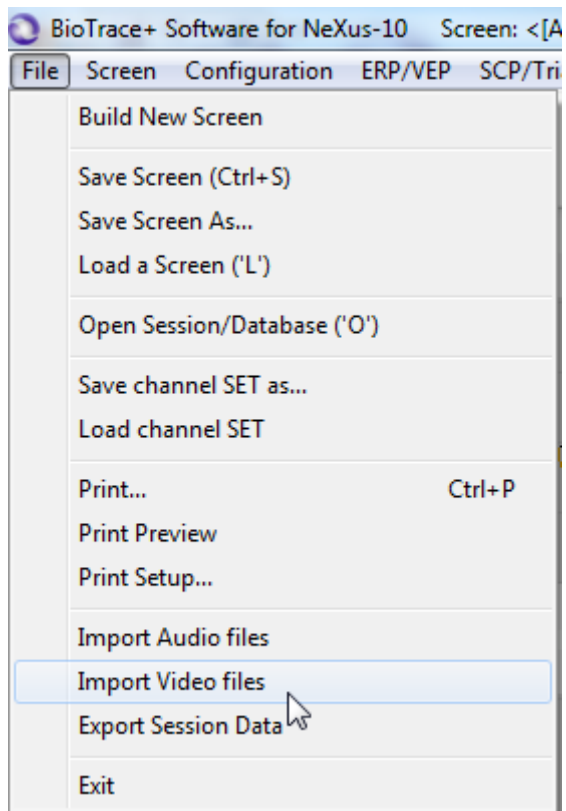
Please read the updated BioTrace+ User Manual for more information on using the new functionality. The BioTrace+ User Manual also describes how to update to this new version.

Visit our website for more information about BioTrace+, NeXus, or Mind Media:
www.mindmedia.com

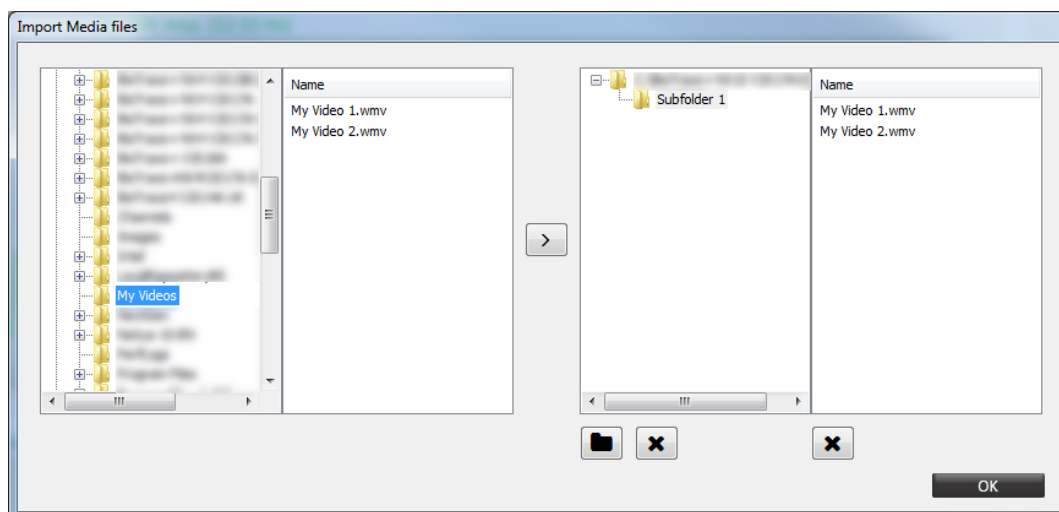
BioTrace+ is a product of Mind Media for NeXus. © Mind Media B.V. The Netherlands. All rights reserved.

Audio and Video Library


- Import interface for audio and video files import from different locations.

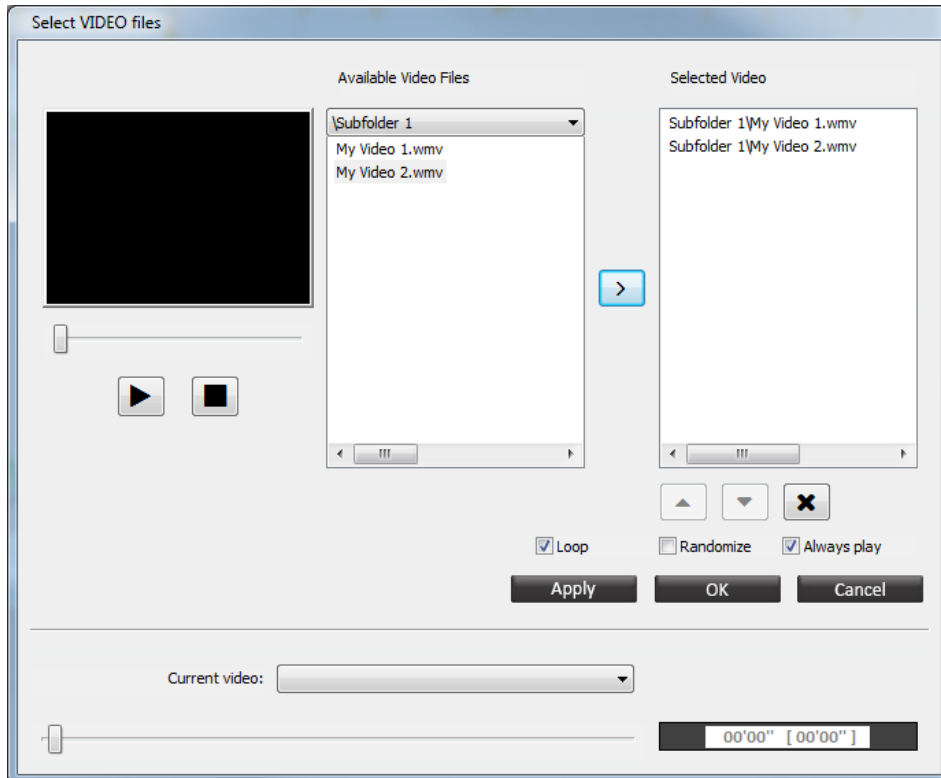


- Create (and delete) subfolders for audio and video files



For more information on importing audio and video files, please refer to the software manual, chapter 3. Feedback

- Updated and redesigned video and audio feedback menu. Open the interface by clicking the change feedback  in the therapist screen.



EEG FFT Analysis

Improved analysis and reporting functionality:

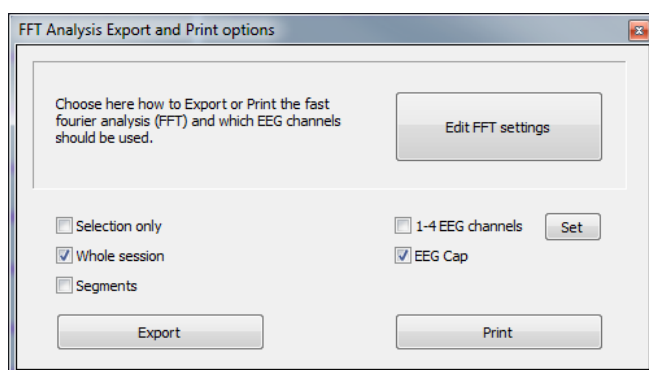
- Printed reports for selected data or whole session:
 - o 2 channel EEG FFT Analysis - NeXus-4
 - o 4 channel EEG FFT Analysis - NeXus-10
 - o 19 channel EEG FFT Analysis - NeXus-32
- Export EEG data to excel, either for selections, the whole session or per segment. Data for 1-4 EEG (training) channels or for the NeXus EEG cap (19 channels) can be exported.

55	Absolute power (uV ²)	Delta	Theta
56	FP1-(A1~A2)	33,6	8,7
57	FP2-(A1~A2)	31,8	9,3
58	F7-(A1~A2)	17,3	6,2
59	F3-(A1~A2)	13,9	7,9
60	Fz-(A1~A2)	16,2	9,3
61	F4-(A1~A2)	15,8	9,5
62	F8-(A1~A2)	14,8	7,8
63	T3-(A1~A2)	5,6	3,4
64	C3-(A1~A2)	8,2	5,1
65	Cz-(A1~A2)	12,5	7,5
66	C4-(A1~A2)	9,2	6,2
67	T4-(A1~A2)	6,4	4,7
68	T5-(A1~A2)	4,0	3,0
69	P3-(A1~A2)	6,9	4,3
70	PZ-(A1~A2)	8,2	5,0
71	P4-(A1~A2)	7,2	5,0
72	T6-(A1~A2)	5,9	3,9
73	O1-(A1~A2)	5,5	3,5
74	O2-(A1~A2)	5,7	3,3
75			
76			
77	Relative amplitude (%)	Delta	Theta
78	FP1-(A1~A2)	19,2	15,2
79	FP2-(A1~A2)	19,6	15,2
80	F7-(A1~A2)	18,1	14,0

Segment 1 Segment 2

Ready

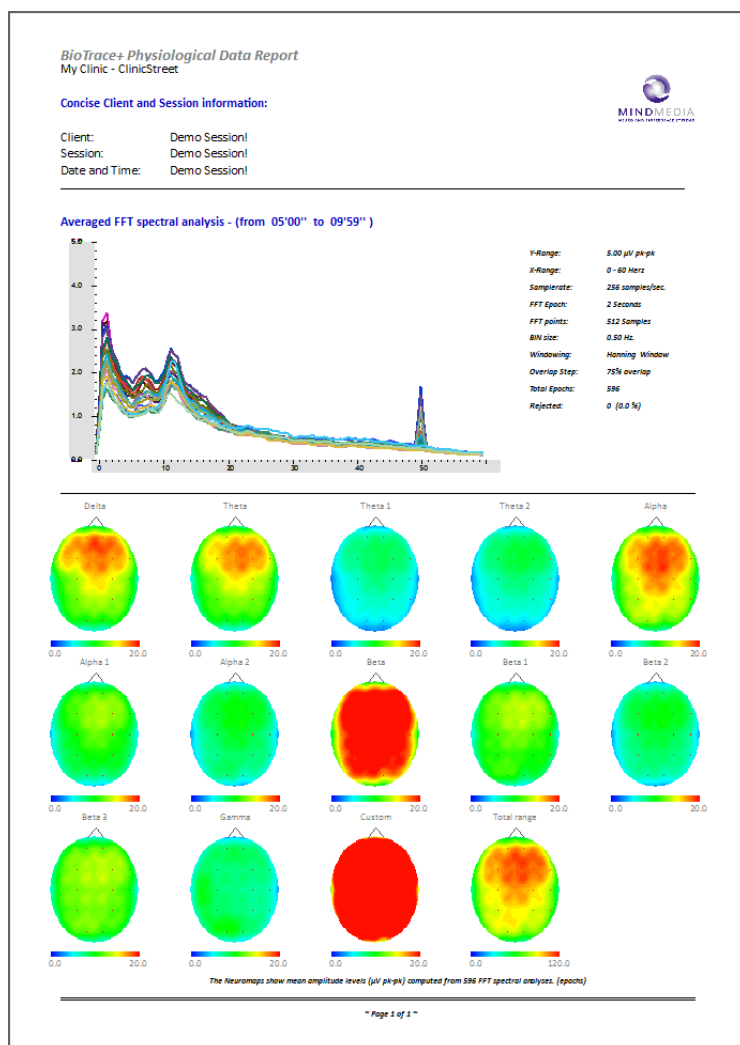
- Updated user interface for EEG FFT



For more information on FFT analysis, please refer to the software manual, chapter 5. Analysis and Reporting

NeuroMapping Report

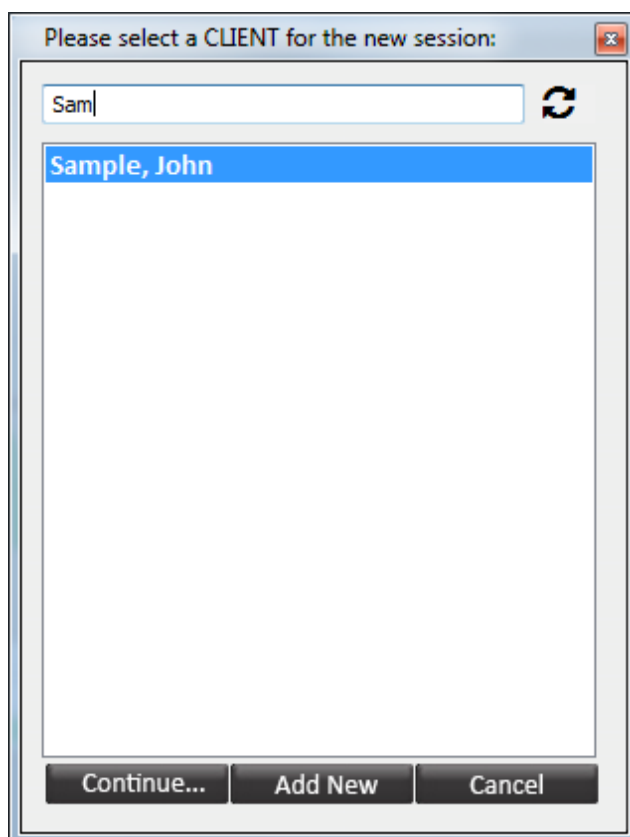
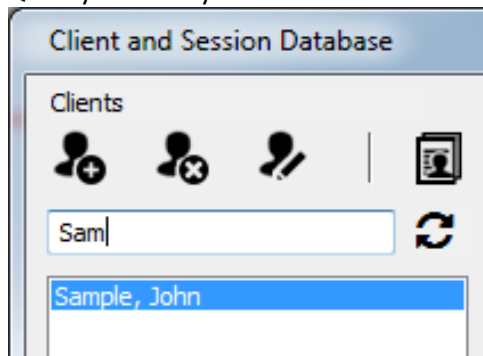
Improved neuromapping functionality (for NeXus 32).



For more information on NeuroMapping, please refer to the software manual, chapter 5. Analysis and Reporting

Search by last name

Quickly search by last name in the session and client database or when starting a recording.



For more information on client search, please refer to the software manual, chapter 1. Basics

Updated Screens

EEG

- Neurofeedback Lab – Workshop Stens | NeXus-10 US, NeXus-32 US
- 2x EEG 2 Band: Updated button action | NeXus-10
- Client: Updated Game Client Screens | NeXus-4, NeXus-10

Z-Score

- All Z-Score training screens: Configuration of EMG bargraph | NeXus-4
- 4 Channel Z-Score screen: X-Axis | NeXus-10, NeXus-32

EMG

- 2x EMG 100-500 Hz Basic: Fixed remove threshold button | NeXus-4, NeXus-10

HRV

- HRV Multimodal: EMG graph | NeXus-10
- Client: Fixed animation screen

Temperature

- Temperature: Updated Title Text | NeXus-4

Respiration

- Respiration Basic: Added client screens for more training options | NeXus-4, NeXus-10
- Client: Added Abdominal Respiration Screen | NeXus-10
- Client: Removed Ocean Background sound | NeXus-4
- Client: Added Pacer Only client screen

My Screens

- NFB Lab | NeXus-10, NeXus 32, Only US versions
- RF Protocol | Only US versions
- Trapezius Evaluation | Only US versions

General Improvements and Fixes

The following functions have been fixed, improved, or added for more stability, better quality, and higher performance of BioTrace+:

- Grid available for line graphs
- Delete favorites via the Screen Browser
- Improved Z-score
- Expanded client confidentiality to export and reports
- Improved interface for activation of BioTrace+
- Improved water ripple effect feedback
- Improved functionality with regards to screen properties
- Changed standard setting of notch filters
- Improved usability in script editor
- Fixes with global reward scores
- Push Feedback Settings improvements
- Optimized import file compatibility
- Added 'Ignore Inhibit' functionality for animations
- Improved hide pacer functionality